

# CP 550

Distributed by:



## EXTENSIVE RANGE OF TESTS TO CARRY OUT COMPREHENSIVE EYE EXAM IN A SIMPLE WAY!



remote  
control



CP 550

CHART PROJECTOR

NO AKL: KEMENKES RI AKL 11201817091



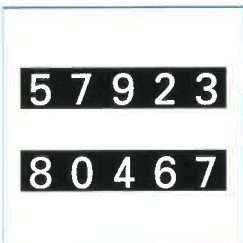
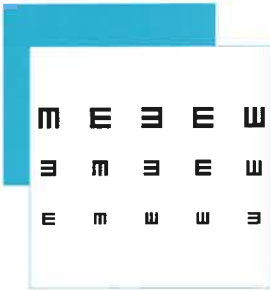
pola

Min : 2 m

Max : 7 m

Optometry





## EXTENSIVE CHOICE OF TESTS

- Visual acuity: Letter, Numbers, Snellen, Landolt C, children charts.
- Binocular balance and special tests: Astigmatism, polarised tests, red/green tests, Aniseikonia, Schober, Phoria...
- 2 types of progression available : A type or B type.

## FLUID ACUITY ASSESSEMENT

- Can be managed either by remote control or by APH550 automatic phoropter keyboard.
- Long lasting LED illumination provides bright and clear images.
- Fast and quiet disk rotation ensures patient comfort.

## OPTIONS

- Wallmount bracket, telescopic tube, polarised filter glass, R&G glass

PROJECTION		TESTS (A OR B TYPE)	
Size	335 x 222 mm (at 5m)	Optotypes	Numbers, Letters, Landolt C, Snellen, Children
Magnification	30 x (at 5m)	Mask and tests	Lines (Horizontal/Vertical) Astigmatism, Cross-cylinder, Jackson Cross, Worth 4 dots Binocular balance Duochrome balance Coincidence Schober, Phoria Minute stereo Fixation point Eye picture
Distance	Projection distance 2.m~7m		
NUMBER OF CHARTS	50		
PROJECTION SPEED	0.03 seconds	DIMENSIONS AND WEIGHT	248(W) x 234(H) x 336(D)mm - 4.5kg
AUTOMATIC SHUT-OFF	5mn	PROJECTION LAMP	30 VA
PROGRAM SETTINGS	2 specific programmable test sequences	POWER SUPPLY	AC 100 - 240V, 50/60 Hz
STANDARD ACCESSORIES	Table base stand Remote control + Batteries Spare fuses 250v - 2AT Projection screen Calibration sheet Test card Dust cover	CE Conformity marking	

As improvements are made, these specifications and pictures are not contractually binding and may be changed without prior notice.

### PRODUCT FUNCTIONS



Illumination



Projection distance



Linear polarisation



Wireless connection capability



Essilor Instruments USA  
8600 W. Catalpa Avenue, Suite 703  
Chicago, IL 60656 - USA  
Tel: 855.393.4647  
Email: info@essilorinstrumentsusa.com  
www.essilorinstrumentsusa.com

### Your Contact



Distributed by:  
PT. Meta Mata Medika www.metamedika.com  
MASPION PLAZA, Jl. Gunung Sahari Raya Kav.18, 3rd Floor Unit 3F  
Jakarta Utara, INDONESIA 14420  
Tel. + 62 21 6470 1108, Fax. +62 21 6470 1114 • Email. info@metamedika.com